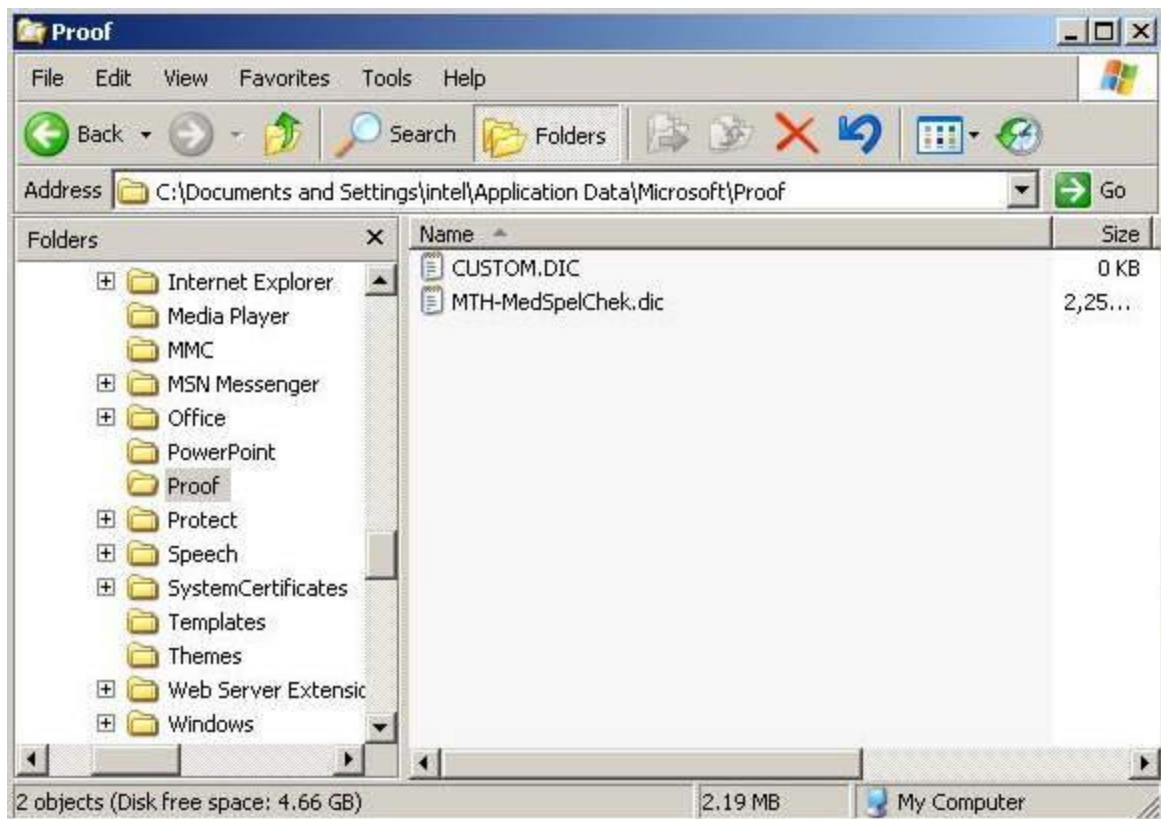
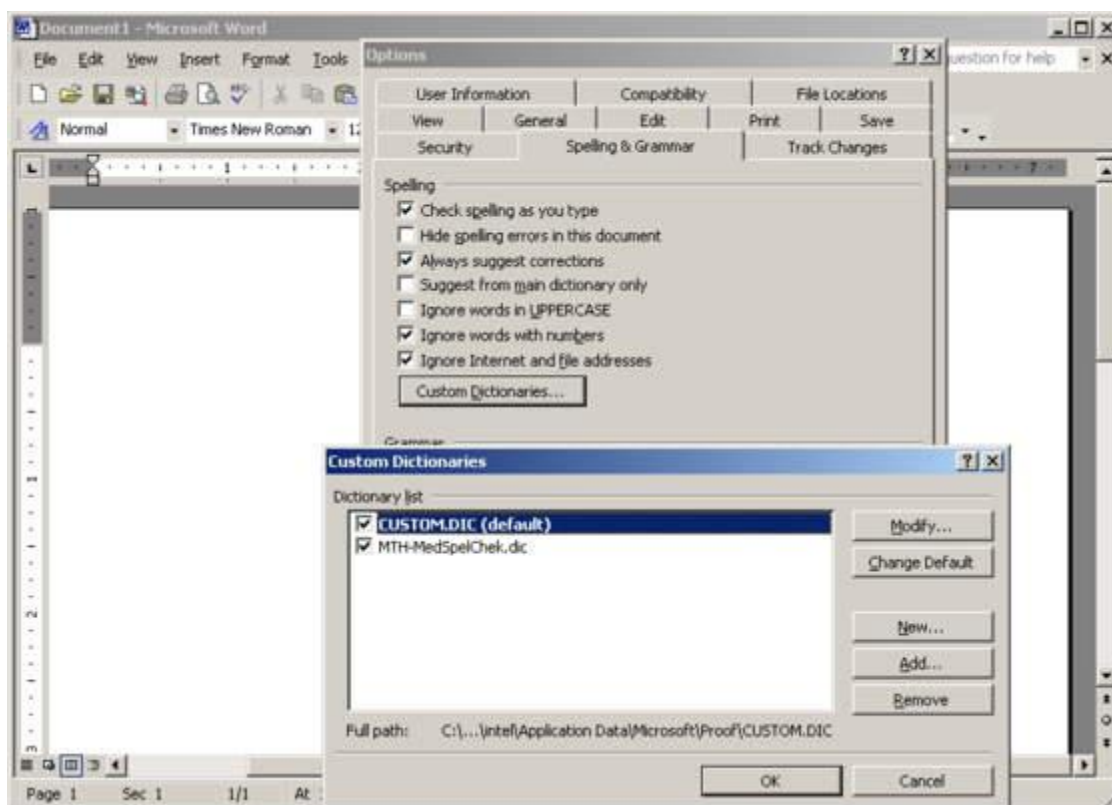


Installation Instructions:

- [Download MTH-Med-Spel-Chek](#) to your desktop.
- Unzip the inside content MTH-MedSpelChek.dic to your desktop.
- Copy this dictionary file to the folder where CUSTOM.DIC resides in your system. In my desktop (Windows XP), I found it at C:\Documents and Settings\intel\Application Data\Microsoft\Proof. In my laptop (Windows Vista), it is at C:\Users\Raj\AppData\Roaming\Microsoft\Proof. So, check where the folder “Proof” is in your system and transfer MTH-MedSpelChek.dic to that folder.
- If the folder “Proof” is not showing up, it might have got hidden as system folder. In that case, go to Tools/Folder Options/View. Click “Show hidden files and folders.”



- Now open MS Word. Go to Tools/Options/Spelling & Grammar/Custom Dictionaries.
- Check the slot MTHMedSpelChek.dic. Click OK.
- Refer the image below for which slots that need to be checked and unchecked. Make sure the slots before “Suggest from main dictionary only” and “Hide spelling errors in this document” are unchecked. Click OK.
- That’s it! Voila, enjoy working with the free medical spell checker.



Spread the word if you find it useful. Utmost care has been taken to avoid any error at my end. However, if you find any inconsistency that has crept through, feel free to [bring it to my attention](#) to rectify the mistakes in the future versions. Stay tuned by [subscribing to my feed](#) for news about the future versions.

Related Articles:

- [Free AutoCorrect Backup And Restore Utility For Microsoft Word](#)
- [Free Medical Transcription Softwares. Download & Resource Center](#)
- [Free Auto Text Word Expander Softwares For Medical Transcription](#)
- [The Microsoft Word Shortcut Keys](#)
- [Latest Medical Vocabulary For Transcriptionists – List Thirteen](#)

Tags: [medical dictionary](#), [medical glossary](#), [medical spell checker](#), [recent medical terms](#)